

culburra beach holiday park

culburra beach



price list & brochure 2017/18

Situated at Culburra Beach, at the mouth of the Crookhaven and Shoalhaven Rivers this park is great for families and fishers alike, with access to deepwater and estuarine fishing areas and great facilities for kids of all ages.

- 2 & 3 bedroom cabins
- Studio cabin
- Spa cabins
- Easy access cabin
- BBQ, picnic and camp kitchen
- Attractive surroundings and grounds
- Powered ensuite sites
- Synthetic turf sites
- Spacious, shady sites
- Solar assisted swimming pool
- Splash pad
- Jumping pillow
- Kids' playground
- Mini golf
- Summer holiday activities
- Internet access

Bookings: 1300 733 026

Culburra Beach Holiday Park

Contact our managers

2A Prince Edward Avenue
Culburra Beach, NSW 2540

Phone/Fax 02 4429 5405

Email culburra@holidayhaven.com.au

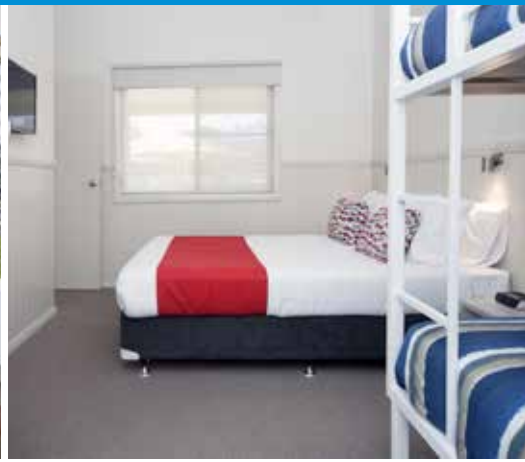
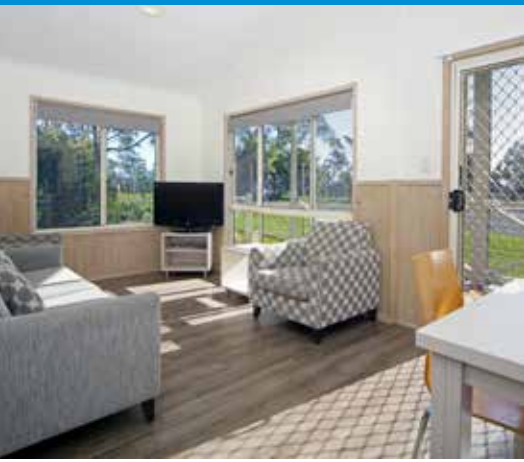
Web culburrabeach.holidayhaven.com.au

Relax. Enjoy. Explore.

www.holidayhaven.com.au



SHOALHAVEN SOUTH COAST NSW



booking terms & conditions

Effective 1 July 2017 – 30 June 2018. GST included. Prices and information subject to change without notice.

- Maximum 4 adults per cabin.
- Bookings on any site or in any cabin in the park shall not exceed 30 consecutive nights.
- Persons under 18 (or persons on their behalf) are not permitted to make reservations. Unaccompanied minors will not be accepted as guests in the park.
- 1 car space is allocated per site booked. Additional vehicles unless otherwise arranged with park management must be parked in allocated visitor parking or outside the park. Extra car spaces not available in peak periods.
- For un/powereds sites only ground sheets made of shade cloth or open weave material are permitted.
- Strictly 1 tent or 1 caravan or 1 camper trailer per site.
- Day visitors are to park in visitors carpark and check in at reception.
- All damages to park property will be charged to the client's credit card.
- There is no smoking permitted in proximity to park accommodation or other buildings, including on cabin decks and building verandas.

Pets Policy

- Pets are not permitted in this park. Please visit www.holidayhaven.com.au for dog friendly parks (conditions apply).

Booking Periods

- Peak Season –
October Long Weekend 29/9/17 to 2/10/17, minimum 3 nights.
Christmas 20/12/17 to 28/1/18, minimum 7 nights.
Easter 30/3/18 to 2/4/18, minimum 4 nights.
- Low Season – All other times, unless otherwise stated.
- Sites/Cabins are booked from 2pm (Check in) on day of arrival until 10am (check out) on day of departure unless otherwise stated or arranged prior with park management, fees may apply
- Minimum bookings may apply during some booking periods

Payment and Deposits

- Guest credit card details are required to secure all bookings.
- Deposit of at least 1 night's tariff is required at time of booking for all off-peak stays. Balance must be paid in full on.
- Peak Summer Period Bookings Payment – Deposit of up to 1 night's tariff is required at time of booking. 50% of balance to be paid by 1 August 2017. Booking must be paid in full by 1 November 2017.
- Peak Easter Period Bookings Payment – Minimum deposit of up to 1 night's tariff is required at time of booking. 50% of balance to be paid by 1 September 2017. Booking must be paid in full by 1 March 2018.
- Peak October Long Weekend – Deposit of 50% of tariff is required at time of booking. Full amount must be paid by 1 September 2017.

Cancellations and Refunds

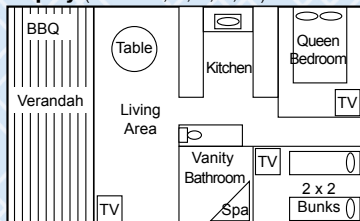
- Park Management reserves the right to cancel or amend any bookings.
- Cancellation fee of up to the first night's tariff will be applied to all bookings when more than 30 days' notice is given.
- Please choose your booking dates carefully REFUNDS ARE NOT AVAILABLE FOR bookings cancelled less than 30 days before arrival or due to early departures, no shows, change of mind, inclement weather, or where clients are asked to leave the park for breaching park rules.

Additional Fees and Charges

- Cleaning Fee – A minimum of \$100 will be charged if cabin/site left in unsatisfactory condition upon departure.

cabin plans

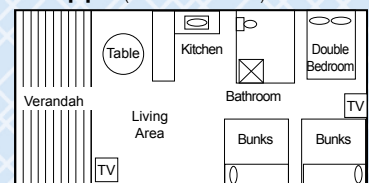
Osprey (Cabins 4, 5, 6, 7, 8)



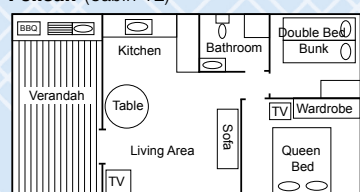
Ibis (Cabin 9)



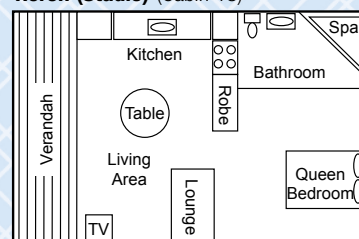
Sandpiper (Cabins 10 & 11)



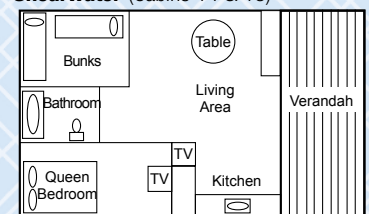
Pelican (Cabin 12)



Heron (Studio) (Cabin 13)



Shearwater (Cabins 14 & 15)



Cabin plans are a guide only and are not to scale. There may be some variations.

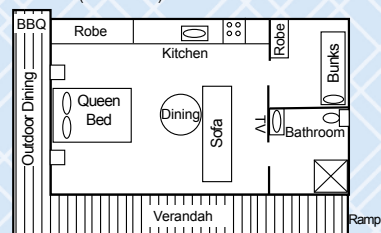
price list 2017/18

	Mon–Thurs p/night	Fri, Sat, Sun per night	Peak Per night	Occupant inclusions	Extra pp/pn
CABINS					
ALBATROSS (Cabin 1) 2 bedrooms, 1st bedroom: queen bed & TV. 2nd bedroom queen bed, single bunks & TV. Bathroom (no bath), separate toilet, full kitchen including dishwasher & Nespresso machine. Dining & lounge include TV, DVD, air conditioning, ceiling fan, BBQ on the verandah, parking for 1 car. Sleeps 6	210	230	310	2 adults & up to 4 kids or 4 adults	10
OSPREY SPA VILLAS (Cabins 4, 5) 2 bedrooms, 1st bedroom: queen bed and TV. 2nd bedroom: 2 double bunks and TV. Double corner spa in selected cabins. Full kitchen, Nespresso machine, TV, DVD player and stereo, air con and ceiling fans. Gas BBQ and sink on the verandah. Limited water views. Parking for 1 car. Sleeps 6	185	200	285	2 adults & up to 4 kids or 4 adults	10
OSPREY VILLA (Cabins 6 – 8) 2 bedrooms, 1st bedroom: queen bed and TV. 2nd bedroom: 2 double bunks and TV. Newly renovated bathrooms (no bath) in selected cabins. Full kitchen, Nespresso machine, TV, DVD player and stereo, air con and ceiling fans. Gas BBQ and sink on the verandah. Limited water views. Parking for 1 car. Sleeps 6	185	200	290	2 adults & up to 4 kids or 4 adults	10
IBIS (Cabin 9) 2 bedrooms, 1st bedroom: queen bed and TV. 2nd bedroom: double bed with a trio bunk. Bathroom (no bath), full kitchen & nespresso machine, TV, DVD player and stereo, air con and ceiling fans. Shared gas BBQ. Parking for 1 car. Limited water views. Sleeps 5	155	170	250	2 adults & up to 3 kids or 4 adults	10
SANDPIPER (Cabins 10 & 11) 3 bedrooms. 1st bedroom: double bed and TV. 2nd bedroom: 2 single bunks. 3rd bedroom: 2 single bunks. Bathroom (no bath), full kitchen, TV, DVD player and stereo, air con and ceiling fans. Shared gas BBQ. Parking for 1 car. Limited water views. Sleeps 6	160	175	250	2 adults & up to 4 kids or 4 adults	10
PELICAN (Cabin 12) 2 bedrooms. 1st bedroom: queen bed and TV. 2nd bedroom: double bed with a trio bunk. Bathroom (no bath), full kitchen, TV, DVD player and stereo, air con and ceiling fans. Shared gas BBQ. Limited water views. Sleeps 5	155	170	250	2 adults & up to 3 kids or 4 adults	10
HERON (STUDIO) (Cabin 13) 1 bedroom – open plan: queen bed, 2 person spa in bathroom. Full kitchen, dishwasher, nespresso machine, TV, DVD player and stereo, air con and ceiling fans. Gas BBQ in front of cabin. Parking for 1 car. Limited water views. Sleeps 2	145	160	245	2 adults	N/A
SHEARWATER (Cabins 14 & 15) 2 bedrooms. 1st bedroom: queen bed and TV. 2nd bedroom: 3 single bunk beds. Bathroom with bath, full kitchen & nespresso machine, TV, DVD player and stereo, air con and ceiling fans. Shared gas BBQ in front of cabin. Parking for 1 car. Limited water views. Sleeps 5	155	170	250	2 adults & up to 3 kids or 4 adults	10
JABIRU (Cabin 16) Easy access unit – open plan: 1 queen bed, 1 set of single bunks in separate bedroom. TV, DVD player and stereo, air con and ceiling fans, special access bathroom and kitchen. Ramp. BBQ and sink on verandah. Parking for 1 car. Sleeps 4	150	165	245	2 Adults & up to 4 kids or 4 adults	N/A

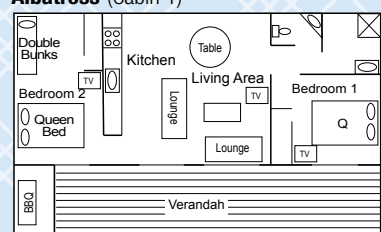
\$30, one night only surcharge. Late check out Sunday up until 3pm, subject to availability.

Seasonal specials and mid-week discounts may apply throughout the year. Please enquire with reception.

Jabiru (Cabin 16)



Albatross (Cabin 1)



	Low per night	Peak per night	Low per night Senior (2 p)	Occupant inclusions	Extra pp/pn
SITES					
POWERED SITES	55	78	33	2 adults & up to 4 children	10
ENSUITE SITES	65	90	50	2 adults & up to 4 children	10

Relax. Enjoy. Explore.

culburra beach holiday park

local attractions and activities

- Direct access to Culburra Beach and 'learn to surf' schools
- Regional boat ramps – access to the foreshore, ocean and the famous Banks fishing grounds
- Walk to Crookhaven Headland and lighthouse – take in the stunning views of the river mouth, beaches and mountains.
- Explore the award-winning Shoalhaven Coast wineries
- Play a round at one of 6 Shoalhaven golf courses
- Drive 20 minutes to Nowra CBD for shopping, Shoalhaven Zoo & Tree top Adventures, cinema and entertainment centre.
- Enjoy fresh local seafood at Greenwell Point
- Two full-size tennis courts nearby
- 15 minutes from the shores of Jervis Bay

